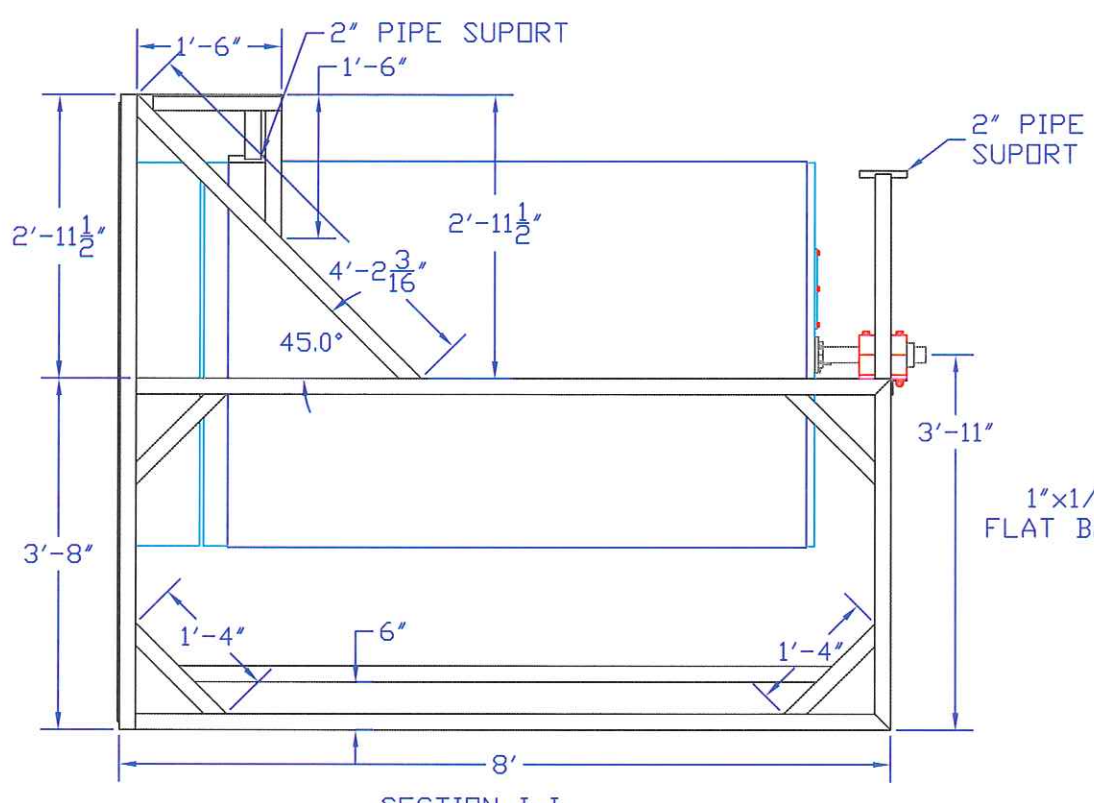
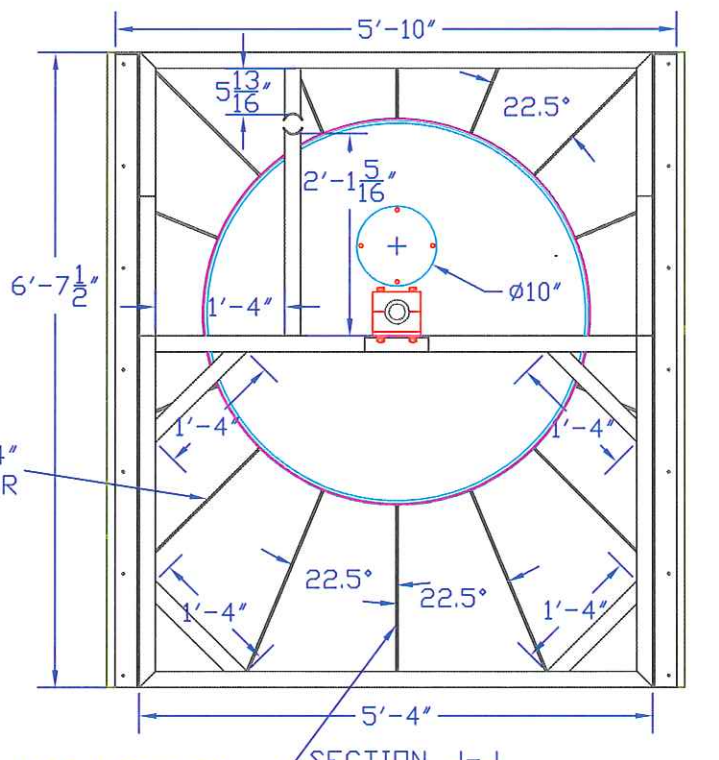


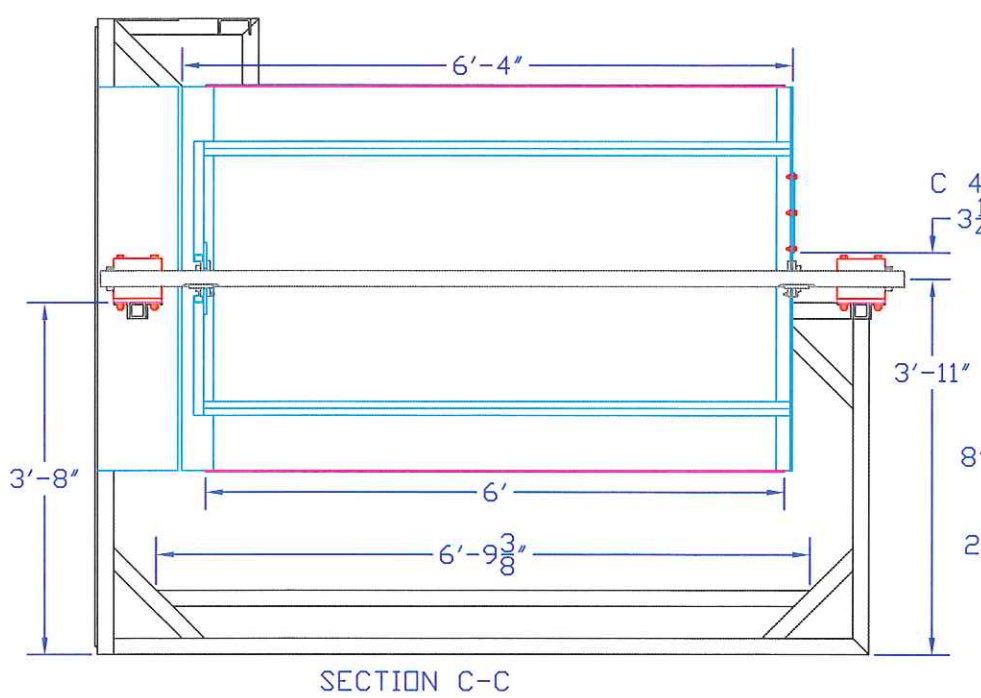
1/2"x6" RUBBER BELT ATTACH WITH 3/16" POP RIVETS



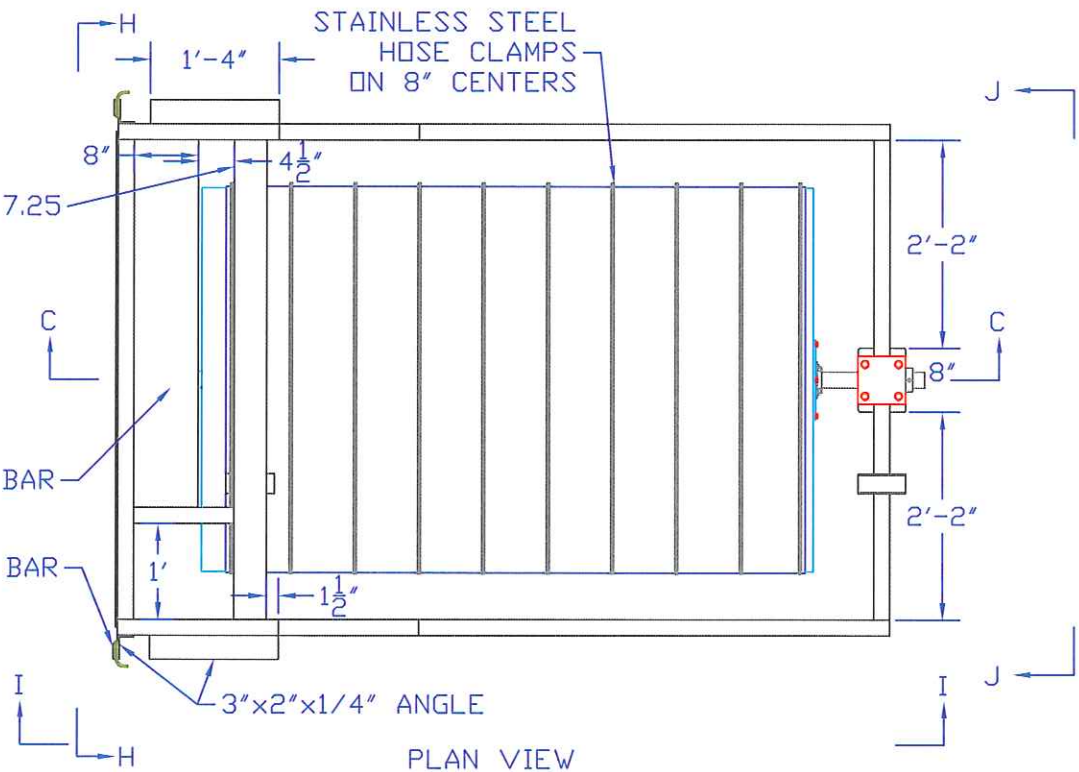
STEEL FRAME IS MADE OF 2"x2"x1/4" SQUARE TUBING UNLESS NOTED OTHERWISE



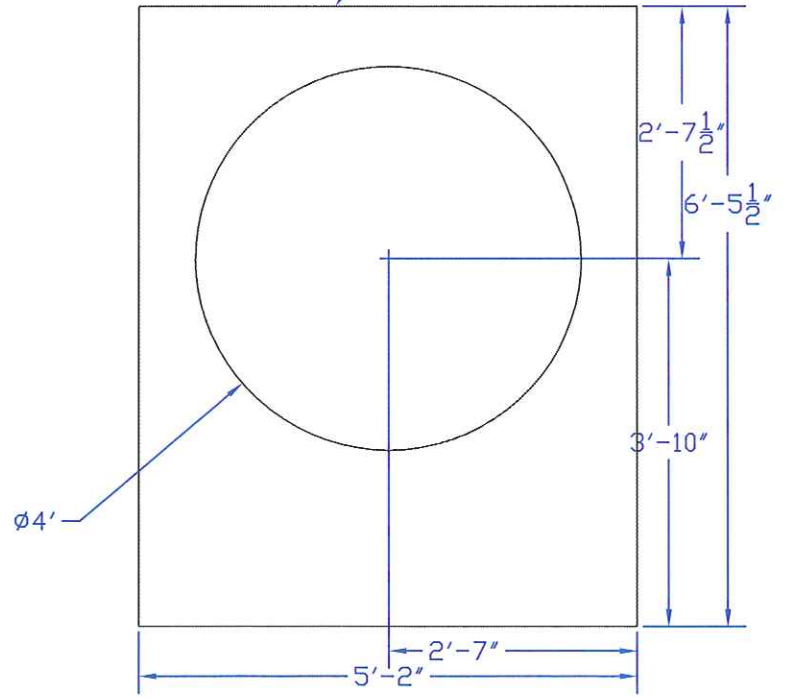
USE 1/8"x1/2" FILLET WELD ON 6" CENTERS BOTH SIDES  
1/4" STEEL PLATE



SECTION C-C



PLAN VIEW

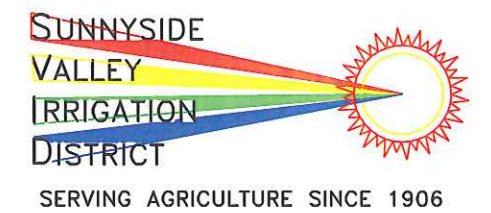


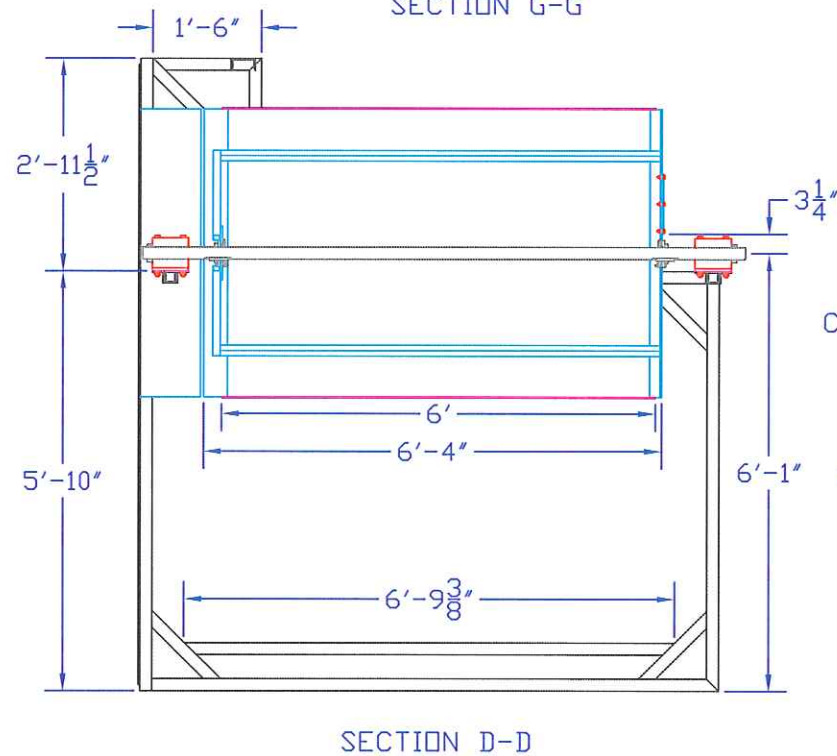
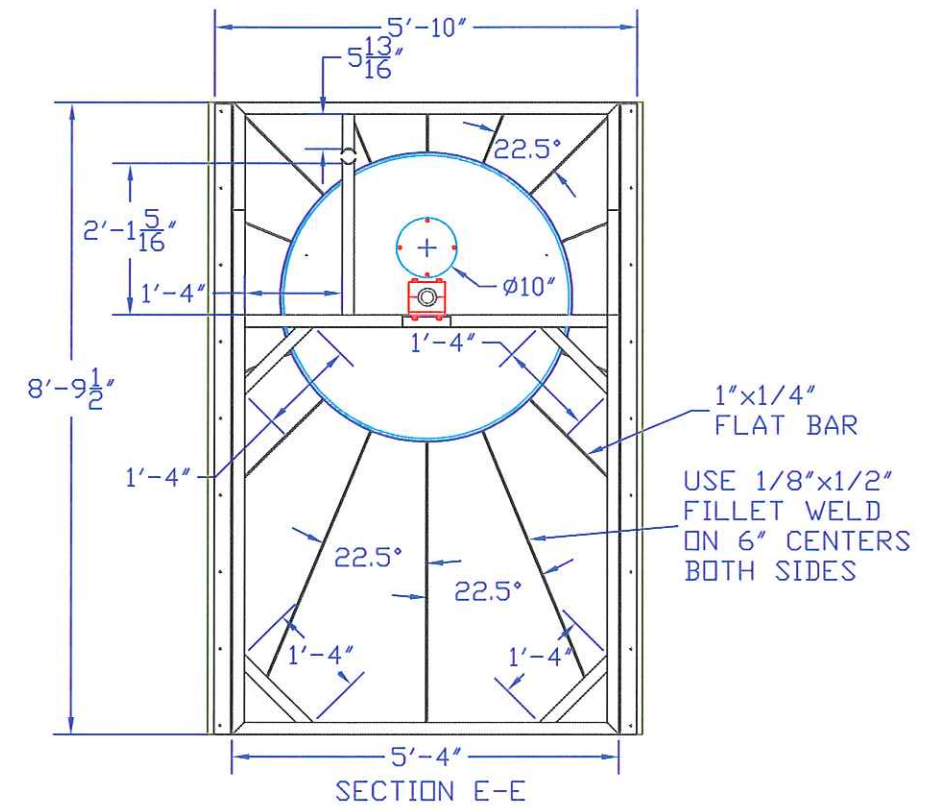
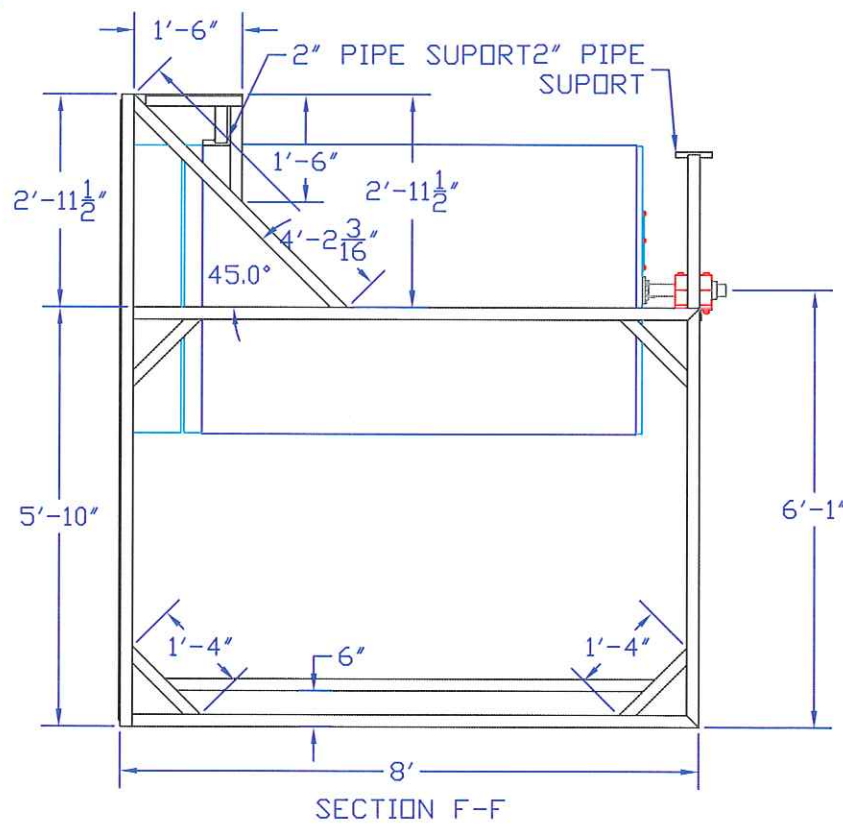
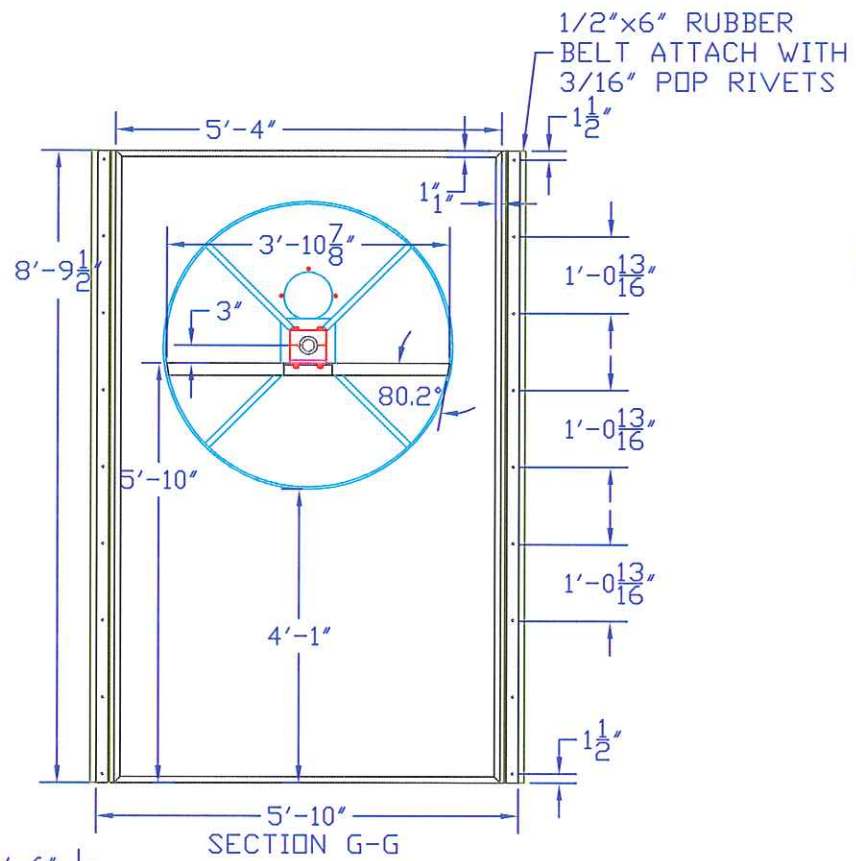
STEEL PLATE DETAIL

DESIGN BY DOUG LINDLEY  
DATE 10/8/09  
ENCLOSED LATERAL  
IMPROVEMENT PROJECT  
SCALE 1/2"=1'

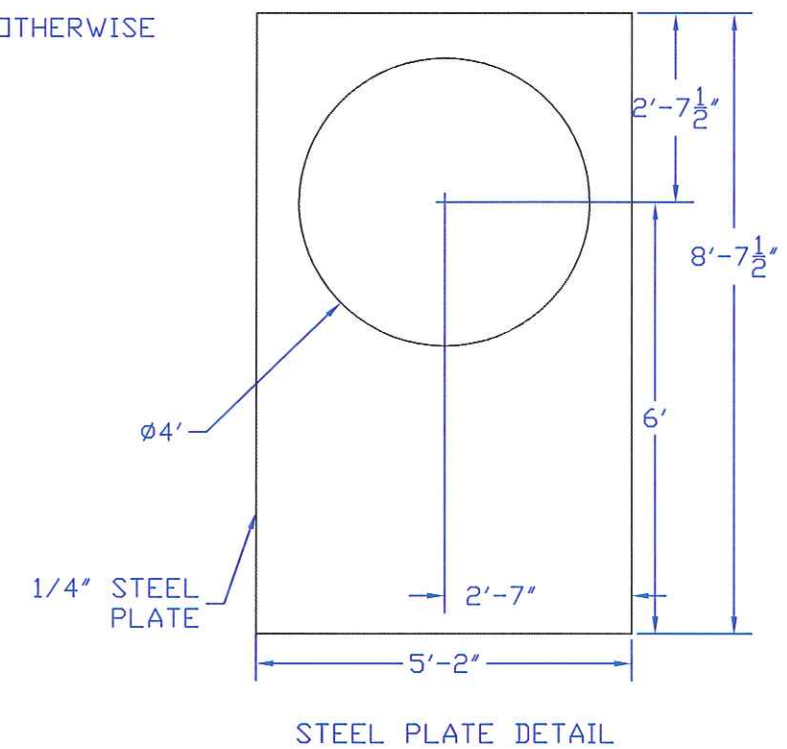
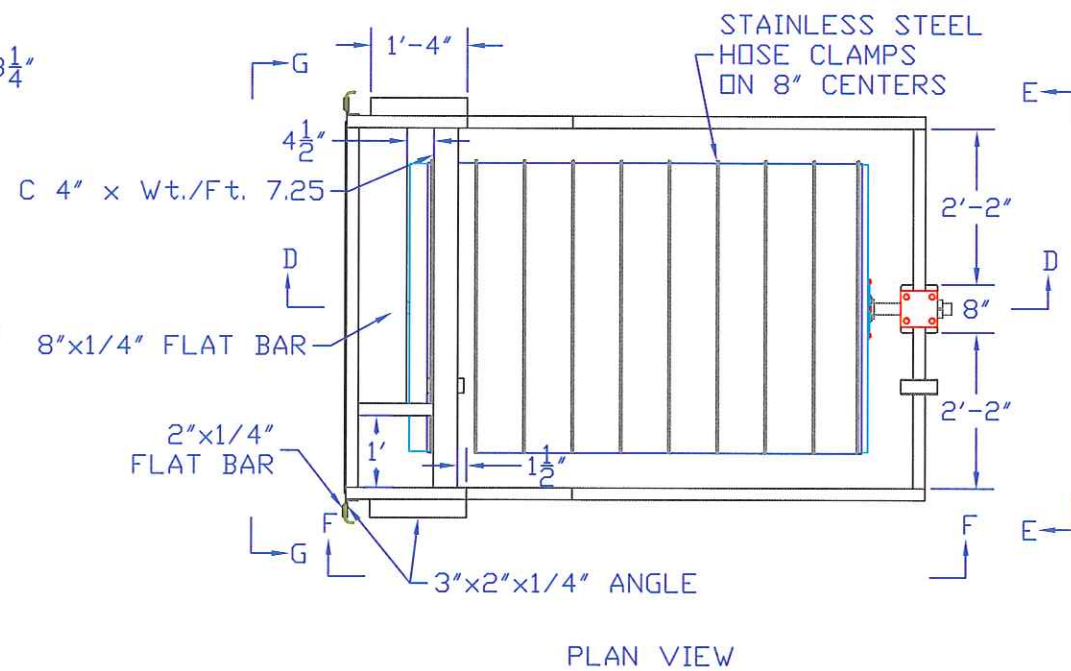
NOTES:  
1. FRAMES SHALL BE WELDED WATER TIGHT  
2. ALL BOLT THREADS SHALL BE COATED WITH ANTI-SIEZE THREAD COMPOUND  
3. ALL PARTS OF THE DRUM SCREENS THAT ARE NOT STAINLESS STEEL SHALL BE POWDER COATED

DRUM SCREEN  
FRAME 40.86  
LATERAL





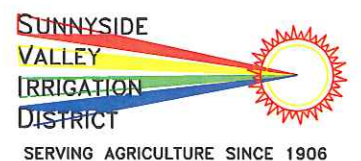
STEEL FRAME IS MADE OF 2"x2"x1/4" SQUARE TUBING UNLESS NOTED OTHERWISE



DESIGN BY DOUG LINDLEY  
DATE 10/08/09  
ENCLOSED LATERAL  
IMPROVEMENT PROJECT  
SCALE 3/8"=1'

NOTES:  
1. FRAMES SHALL BE WELDED WATER TIGHT  
2. ALL BOLT THREADS SHALL BE COATED WITH ANTI-SIEZE THREAD COMPOUND  
3. ALL PARTS OF THE DRUM SCREENS THAT ARE NOT STAINLESS STEEL SHALL BE POWDER COATED

DRUM SCREEN  
FRAME 51.36  
LATERAL

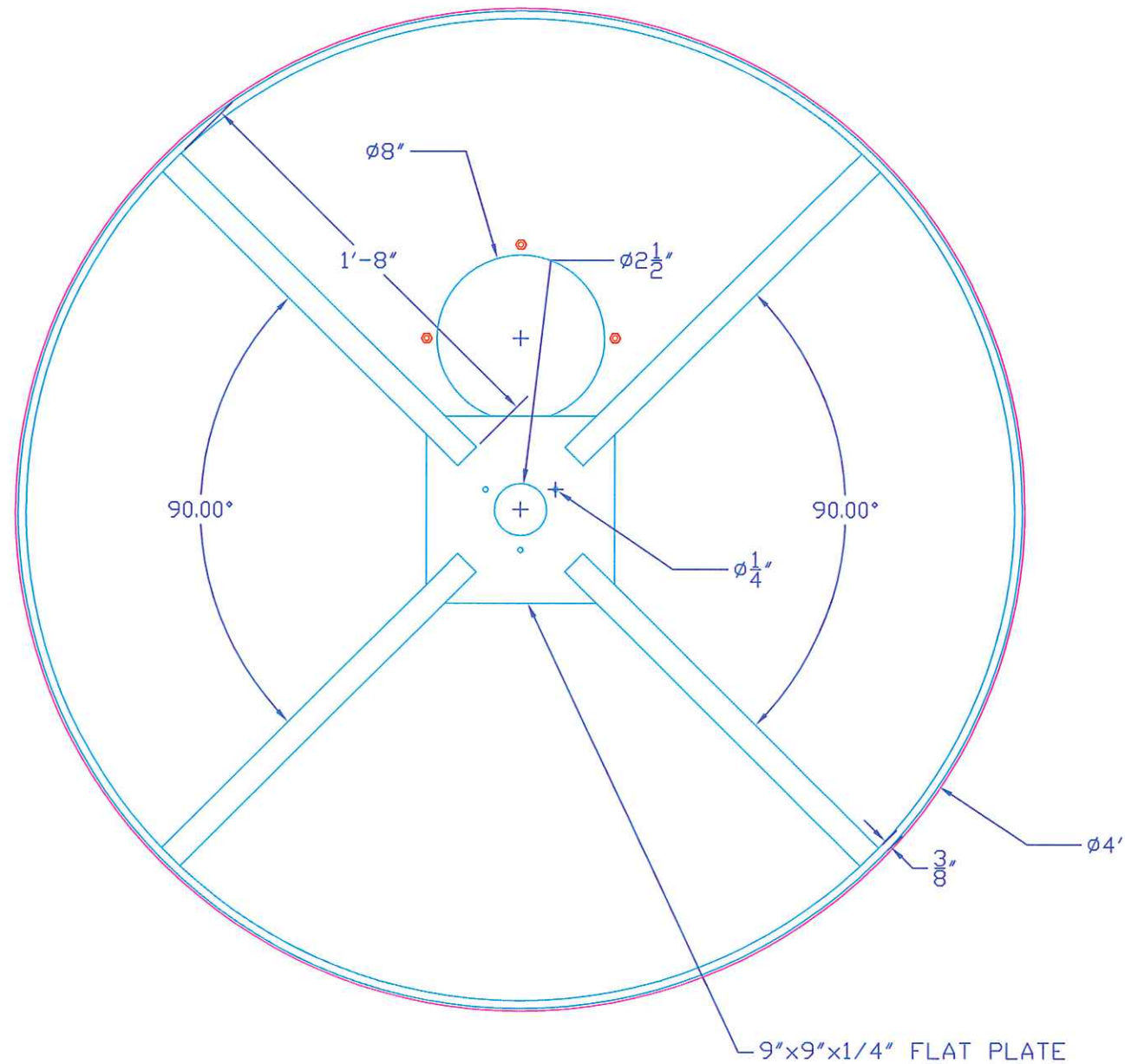






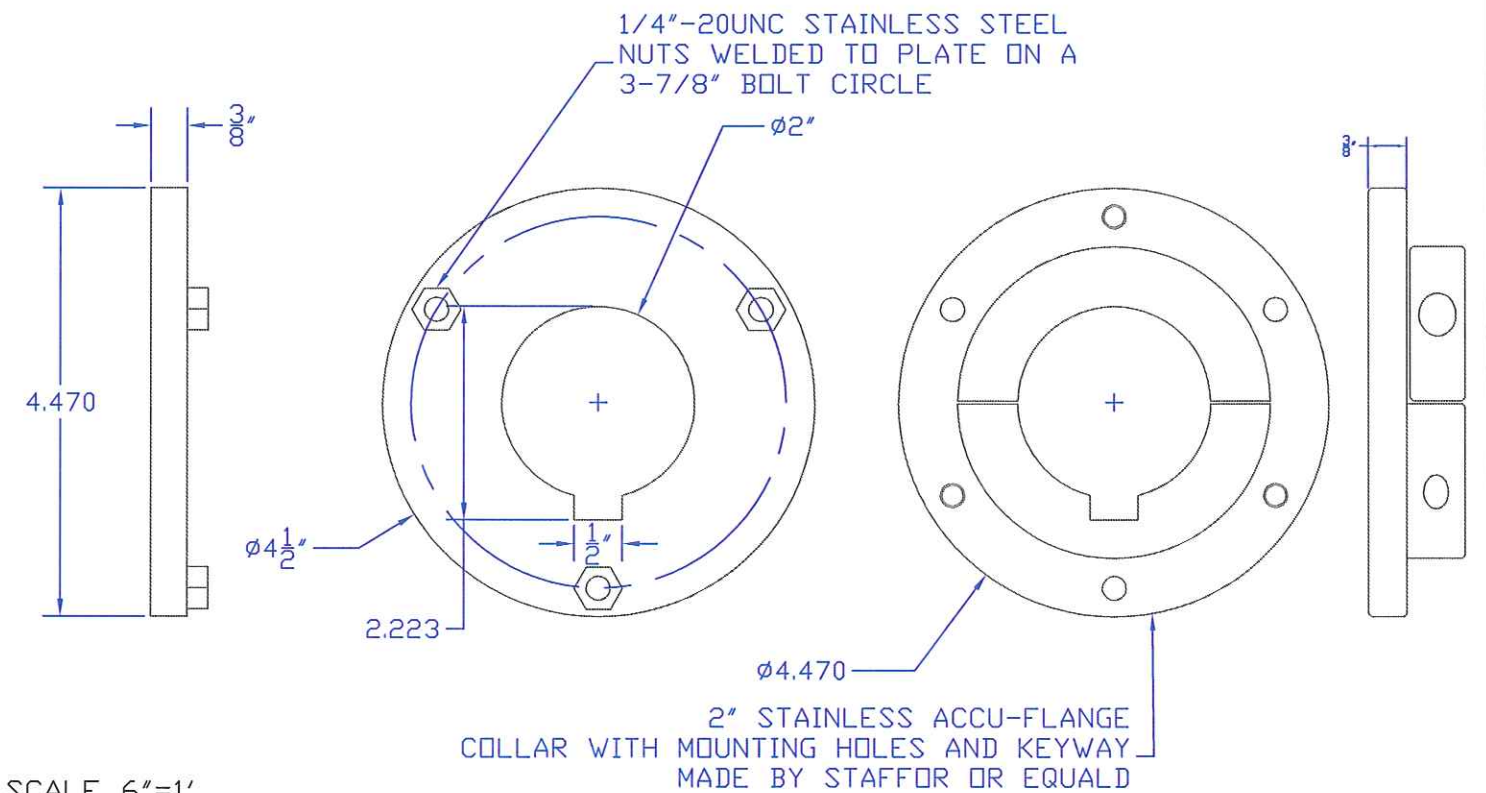
SCALE 1 1/2"=1'

2" STAINLESS SHAFT DETAIL



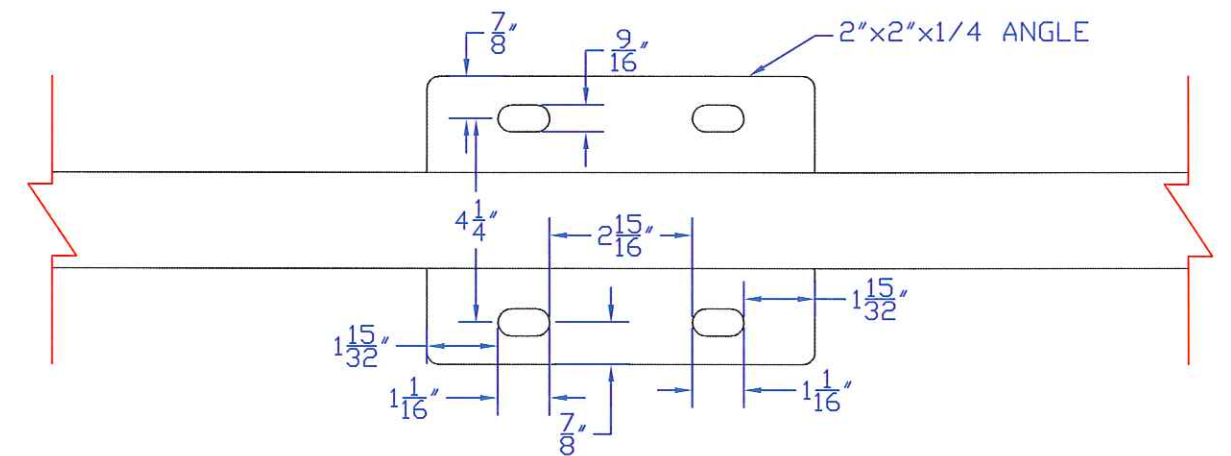
DRUM DETAIL

SCALE 1 1/2"=1'



SCALE 6"=1'

2" STAINLESS ACCU-FLANGE COLLAR WITH MOUNTING HOLES AND KEYWAY MADE BY STAFFOR OR EQUALD



FRAME DETAIL 1

SCALE 3"=1'

DESIGN BY DOUG LINDLEY  
 DATE 10/08/09  
 ENCLOSED LATERAL  
 IMPROVEMENT PROJECT

- NOTES:
1. FRAMES SHALL BE WELDED WATER TIGHT
  2. ALL BOLT THREADS SHALL BE COATED WITH ANTI-SIEZE THREAD COMPOUND
  3. ALL PARTS OF THE DRUM SCREENS THAT ARE NOT STAINLESS STEEL SHALL BE POWDER COATED

DRUM SCREEN PARTS DETAILS